

**HZY12-100 Valve Regulated Lead Acid battery.
12 year design life for stand by power applications.
12 Volts 100 Ah (C20)**

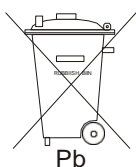
Innovative Features

- Completely maintenance free, sealed construction eliminates the need for watering
- Fully tank formed plates
- Analytical Grade electrolyte
- Spill proof / leak proof
- Valve regulated Max internal pressure 2.5 psi
- Multi-position usage
- ABS Case and cover - V0 on request
- Low self discharge
- FAA and IATA approved as non-hazardous
- Built to comply with IEC 896-2, DIN 43534, BS 6290 Pt4, Eurobat.



Specifications

Nominal Voltage	12 Volts
Nominal Capacity	100Ah (C20 @ 20 °C)
Design Life	12 Years
Operating Temperature	-20 °C to 50 °C
Grid alloy	Calcium / Tin lead alloy
Plates	Flat Pasted
Separator	Microporous polymer
Active material	Very high purity lead
Case and cover	ABS (VO on request)
Charge Voltage	Float 2.25 - 2.30 VPC @25 °C Cycling 2.35 @25 °C Max. 2.4 VPC Max ripple 0.05C (A)
Electrolyte	Gelled Sulphuric acid Analytical grade purity
Venting Valve	EPDM Rubber 1.5 to 2 psi (10.5 - 14 KPa) release pressure. Resealing at 1 psi (7 KPa)
Terminal	Epoxy sealed by extended mechanical paths



Haze Battery Company keenly encourages environmental awareness; PLEASE follow guidelines for the recycling /disposal of lead.

**Website: www.hazebattery.com
E mail : sales@hazebattery.com**

**Sealed Lead Acid 12 Volt Bloc GEL Range
PRODUCT SHEET HZY12-100**

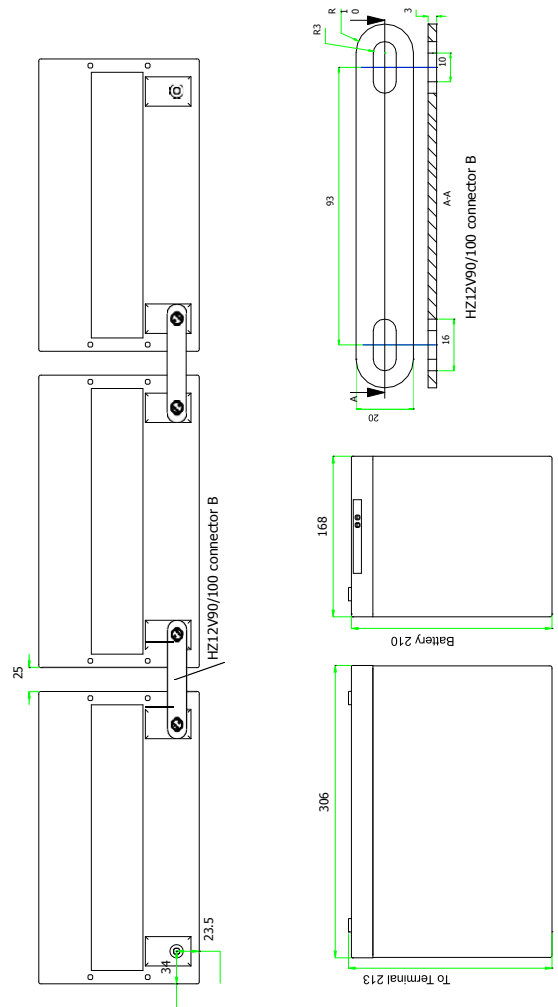
**12V
Gel**

Specifications

Nominal Voltage		12V	
Nominal Capacity		100 Ah	
Dimensions	Total Height (Inc. terminals)	211 mm	8.31 inches
	Length	306 mm	12.05 inches
	Width	168 mm	6.61 inches
	Weight	28.3 Kg	62.54 lbs

Characteristics

Capacity 20 °C(68 °F) To 1.7volts	20 hourrate	105.2 Ah
	10 hourrate	92.6 Ah
	5 hourrate	80.9 Ah
	1 hourrate	61.1 Ah
	15 min rate	38.6 Ah
	Internal Resistance	4.7 mOhms
Capacity correction for Temperature Variations (C20)	40 °C(104 °F)	102%
	20 °C(68 °F)	100%
	0 °C(32 °F)	85%
	-15 °C(5 °F)	65%
Self-Discharge 20°C(68 °F)	Capacity after 1 months storage	98%
	Capacity after 3 months storage	94%
	Capacity after 6 months storage	86%
Short Circuit Current 20 °C(68 °F)	2900	
Terminal	Standard	14mm Insert M6 thread
	Optional	Cu Flag
Charging (Constant Voltage)	Cycli c	2.35 - 2.40 VPC (20-25 °C)
		2.27 - 2.30 VPC (15-25 °C)



Constant Power Discharge - Watts per Cell @20 °C

End V per Cell	5M	10M	15M	20M	25M	30M	35M	40M	45M	60M	90M	2 hr	3 hr	4 hr
1,85	377	273	227	194	170	151	138	126	117	95,5	69,8	55,1	39,0	30,5
1,80	403	292	243	207	181	161	147	135	125	102,0	74,6	58,9	41,6	32,6
1,75	429	310	258	220	193	172	157	144	133	108,5	79,3	62,7	44,3	34,7
1,70	438	317	264	225	197	176	160	147	136	110,9	81,1	64,0	45,2	35,4
1,67	442	320	266	227	199	177	161	148	137	111,9	81,8	64,6	45,6	35,7
1,65	444	321	267	228	199	178	162	149	138	112,3	82,1	64,8	45,8	35,9
1,60	448	324	270	230	201	180	164	150	139	113,4	82,9	65,5	46,3	36,2

Constant Amps Discharge - Amps @20-25 °C

End V per Cell	5M	10M	15M	20M	25M	30M	35M	40M	45M	60M	90M	2 hr	3 hr	4 hr	5 hr	6 hr	7 hr	8 hr	10 hr	12 hr	20 hr
1,85	222	165	133	112	97,7	86,7	78,2	71,2	65,0	52,6	38,3	30,2	21,3	16,8	13,9	12,0	10,7	9,57	7,97	6,89	4,53
1,80	237	176	142	119	104	92,6	83,6	76,1	69,4	56,2	40,9	32,2	22,8	17,9	14,9	12,8	11,4	10,22	8,51	7,36	4,84
1,75	253	187	151	127	111	98,5	88,9	81,0	73,9	59,8	43,5	34,3	24,2	19,1	15,8	13,7	12,1	10,9	9,06	7,83	5,15
1,70	258	192	154	130	113	100,7	90,9	82,7	75,5	61,1	44,5	35,0	24,7	19,5	16,2	14,0	12,4	11,1	9,26	8,00	5,26
1,67	260	193	156	131	114	101,5	91,7	83,5	76,2	61,6	44,9	35,3	25,0	19,7	-	-	-	-	-	-	-
1,65	261	194	156	131	115	101,9	92,0	83,8	76,5	61,9	45,0	35,5	25,1	19,7	-	-	-	-	-	-	-
1,60	264	196	158	132	116	103	92,9	84,6	77,2	62,5	45,5	35,8	25,3	19,9	-	-	-	-	-	-	-

Ampere Hour @20-25 °C

End V per Cell	2 hr	3 hr	4 hr	5 hr	6 hr	7 hr	8 hr	10 hr	12 hr	20 hr
1,85	57,4	60,3	63,9	67,1	69,7	72,2	74,8	76,6	79,7	82,7
1,80	64,5	68,3	71,7	74,4	77,1	79,9	81,8	85,1	88,3	96,7
1,75	68,6	72,6	76,3	79,2	82,0	85,0	87,0	90,6	93,9	102,9
1,70	70,1	74,2	77,9	80,9	83,8	86,8	88,9	92,6	96,0	105,2
1,67	70,7	74,9	78,6	-	-	-	-	-	-	-
1,65	71,0	75,2	78,9	-	-	-	-	-	-	-
1,60	71,7	75,9	79,7	-	-	-	-	-	-	-

